

# Diabetes Think Tank

## Improving the quality of care for people with diabetes

Since 2008, the Diabetes Think Tank has brought together policy makers, patient group representatives and healthcare professionals from across the diabetes patient pathway to provide them with a platform to discuss and propose solutions to the current challenges faced by the diabetes community.

The reasons behind the variation in the quality and experience of care for people with diabetes across the country are complex. However, the quality of care being delivered by individual providers will be a determinant factor. The introduction of the Care Quality Commission's (CQC) new inspection regime for NHS services in England provides an opportunity for these variations to be addressed and for improvements to be made in the care and treatment that people with diabetes receive.

This infographic explores some of the variations in diabetes care and outlines recommendations from the Diabetes Think Tank on how the new inspection regime can look at addressing these.

### CQC inspections

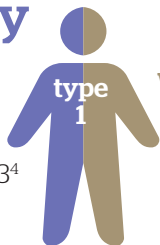
All **161** acute hospital trusts in England will have been inspected and rated by the end of 2015<sup>1</sup>



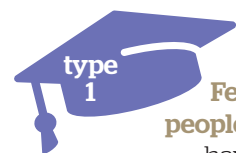
All **8,000** GP practices in England will have been inspected and rated by April 2016<sup>2</sup>

### Diabetes care in the community

Less than half of people with **type 1** diabetes received all eight care processes in 2012/13<sup>4</sup>



**Two out of every five** people with diabetes did not receive all eight care processes in 2012/13<sup>3</sup>



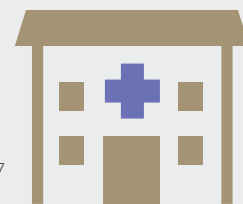
Fewer than **2 in 100** people with **type 1** diabetes have been offered an education programme<sup>5</sup>



Fewer than **one in twenty** people with **type 2** diabetes have been offered an education programme<sup>6</sup>

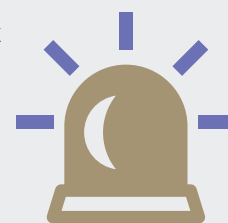
### Diabetes care

Almost **one in six** hospital patients had a **diagnosis of diabetes** in 2013<sup>7</sup>



**Two out of three** people with diabetes in hospital **did not** receive a visit from a member of the diabetes specialist team in 2013<sup>8</sup>

People with diabetes are almost **two thirds more likely to be readmitted to hospital** within 28 days than people without<sup>9</sup>



**20,000 deaths** among people with diabetes could have been prevented in 2011/12 through better management of the disease<sup>10</sup>

### Diabetes Think Tank is calling for:

**1** The CQC to assess whether providers have participated in national clinical audits and data collections. If not, the CQC should require that they supply the same data on service performance to incentivise participation.

**2** The CQC to address any gaps in data on service performance for people with diabetes who fall between care settings or who need care from specific services (eg mental health).

**3** The CQC to use diabetes as an exemplar for determining how its inspection regime can best monitor care and support being provided for people living with other long-term conditions.

<sup>1</sup> Care Quality Commission, 'Chief Inspector of Hospitals announces inspection plans', July 2013 <sup>2</sup> Care Quality Commission, 'Inspections of GP practices and out-of-hours services start next month', March 2014 <sup>3</sup> Care, Quality Commission, 'The State of Health Care and Adult Social Care in England 2013/14', October 2014 <sup>4</sup> Care, Quality Commission, 'The State of Health Care and Adult Social Care in England 2013/14', October 2014 <sup>5</sup> Care, Quality Commission, 'The State of Health Care and Adult Social Care in England 2013/14', October 2014 <sup>6</sup> Care, Quality Commission, 'The State of Health Care and Adult Social Care in England 2013/14', October 2014 <sup>7</sup> Care Quality Commission, 'The State of Health Care and Adult Social Care in England 2013/14', October 2014 <sup>8</sup> Care, Quality Commission, 'The State of Health Care and Adult Social Care in England 2013/14', October 2014 <sup>9</sup> Health and Social Care Information Centre, 'National Diabetes Audit 2013', March 2014 <sup>10</sup> Health and Social Care Information Centre, 'National Diabetes Audit 2011-2012: Report 2: Complications and Mortality', 2013